



Kingmoor Nursery and Infant School

www.kingmoorinfants.com
admin@kingmoor-inf.cumbria.sch.uk

Hether Drive, Lowry Hill,
Carlisle, CA3 0ES
01228 558892

Headteacher: Mrs N. Corfield

Loving Learning: Enjoying, Discovering, Growing, Together.

25/08/20

Dear Parents

We are absolutely delighted to be welcoming all pupils back to School next week. We are writing to you now with an updated version of the information we sent in late July. We will put photos of the external one way system, entrance/exit doors and a social story on social media which may help you and your child/ren prepare for next week.

Using our school systems, the revised Government guidance, the development of Test and Trace and Local Authority/Health and Safety risk assessments we have a good understanding of how to make school a safe environment for everyone. We understand that some children and families may feel anxious about returning to school and it is our aim to support everyone and make sure school feels as normal as possible.

Pupils start back at school as follows:

Year 1 /2: Wednesday 2nd September
Reception / Nursery: Monday 7th September

Start/finish times:

Nursery- 8:45- 3:00- wrap till 3:30

Class 1- 9:00- 3:30

Class 2- 8:50- 3:20

Class 3- 8:55- 3:25

Year 1- 8:50- 3:20

Year 2- 8:55- 3:30

If you have children in different classes or at KJS both schools are asking families to drop children off at the earliest of the times you have been given. We have attached a map with clear directions for entrance and exit doors. Parents can now book for Breakfast and After School club.





Kingmoor Nursery and Infant School

www.kingmoorinfants.com
admin@kingmoor-inf.cumbria.sch.uk

Hether Drive, Lowry Hill,
Carlisle, CA3 0ES
01228 558892

Headteacher: Mrs N. Corfield

Loving Learning: Enjoying, Discovering, Growing, Together.

Parents in school

We know that some children, our new children in particular, may need support from staff and parents to settle them into school. Many children have had a significant amount of time out of school and we know that this may cause some distress. We want all children to feel settled and safe and with this in mind we are:

- **Asking parents not to enter the building unless absolutely necessary.**
- Recognising that some parents may need to bring their children into school for the first day or so to support and settle them.
- Asking parents if they do need to enter the building to support their child that they do not touch equipment and keep their distance from staff and pupils.

Minimising the risk of transmission

We are putting various control measures in place to minimise risk to enable school to operate at full capacity in September. We will continue the increased cleaning and hygiene routines already established.

The key points will be:

- Staggered start and end time to reduce the adults on site at any one time. (please see below for details)
- Parents will be asked to socially distance from staff and contact the school office by phone rather than in person.
- There will continue to be a strict one-way system around the school site for parents dropping off/picking up. Parents will be asked to only use our gates (unless you have children at KJS). With more children on site this must be adhered to. Just one adult **per family** please.
- We ask that parents do not use the car park between the times of 8:20am and 3:45pm.
- Break times will be staggered and there will be new lunchtime routines. Year 1 and 2 will use the outdoor equipment on a rota.
- The whole site will remain locked down at all times to prevent community use of the equipment.
- Children in Reception and Year 1 will have water bottles provided by school which will remain in school. This is something we are gradually rolling out throughout school.





Kingmoor Nursery and Infant School

Hether Drive, Lowry Hill,
Carlisle, CA3 0ES
01228 558892

www.kingmoorinfants.com

admin@kingmoor-inf.cumbria.sch.uk

Headteacher: Mrs N. Corfield

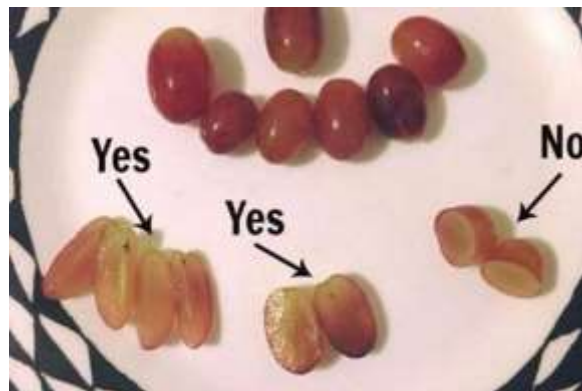
Loving Learning: Enjoying, Discovering, Growing, Together.

- On PE days children will be able to come dressed in PE kits. PE kit is white T-shirts, black shorts, black Leggings/joggers in the cooler weather. To be worn with their school jumper/cardigan. You will be told when these will be.
- Children need to only bring a water bottle (year 2 only as year 1 and Reception have these provided) and a book bag. Please do not send children with back packs or any other bags.

SNACK:

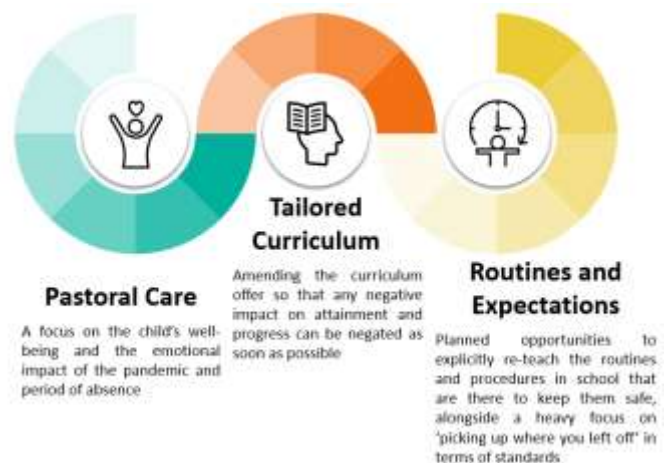
For the time being children will need to bring a small, fruit snack (this should fit in their book bag).

Snacks may include a piece or pot of fruit only. Grapes MUST be halved lengthways to avoid risk of choking.



Curriculum, Mental Health and Well-being

Kingmoor Nursery and Infant School is going to commit time during September to ensuring that routines, expectations, standards, relationships and values are quickly re-established. At the heart of these plans, getting children 'back-on-track' in both an academic and emotional sense is the absolute priority.





Kingmoor Nursery and Infant School

www.kingmoorinfants.com
admin@kingmoor-inf.cumbria.sch.uk

Hether Drive, Lowry Hill,
Carlisle, CA3 0ES
01228 558892

Headteacher: Mrs N. Corfield

Loving Learning: Enjoying, Discovering, Growing, Together.

We will write to you again over the next week or so but do not hesitate to get in touch if you have any concerns or queries. School is not staffed every day this week but we will endeavour to answer all queries by Tuesday 1st September at the very latest. School will be fully staffed on Tuesday but in the meantime please email the school office.

Yours faithfully

Mrs N. Corfield



MENTAL
HEALTH
AT WORK

KIDSAFE Relax Kids

